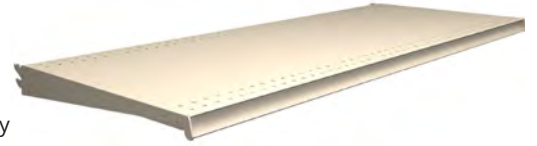


SHELVES

TL SHELF

- Two position tilt-in Shelf with extended bracket
- Angular adjustment: flat or 17° downslope
- Molding accommodates a 1.235" tag
- 1/4" perforations for clip-on accessories
- Can order with Aluminum Tag Moldings installed or can order Molding for Shelf separately



Example Part # : **TL 4 19 N PLT**

1. **TL Shelf: TL**
2. **Width: 2', 30", 3', 4'**
3. **Depth: 7", 10", 13", 15", 16", 17", 19", 20", 22", 25", 28", 31"**
4. **Molding: N, M13S, M13G, M35S, M35G**
5. **Standard Finish: PLT**, Optional Catalog Colors



Lbs evenly distributed

SHELF DEPTH	DOWNSLOPE	
	FLAT	17°
7"	300	300
10" - 25"	500	250
28" & 31"	400	200

DL SHELF

- Three position, drop-in Shelf with extended bracket
- Angular adjustment: flat, 17° or 30° downslope
- Tag molding and perforations similar to TL Shelf
- Can order with Aluminum Tag Moldings or can order Molding for shelf separately



Example Part # : **DL 4 19 N PLT**

1. **DL Shelf: DL**
2. **Width: 2', 30", 3', 4'**
3. **Depth: 7", 10", 13", 15", 16", 17", 19", 20", 22", 25", 28", 31"**
4. **Molding: N, M13S, M13G, M35S, M35G**
5. **Standard Finish: PLT**, Optional Catalog Colors



Lbs evenly distributed

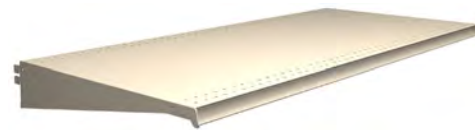
SHELF DEPTH	DOWNSLOPE		
	FLAT	17°	30°
7"	300	300	125
10" - 19"	500	250	250
20" - 25"	500	250	125
28" & 31"	400	200	100

SUFFIX KEY

N = No Molding	M35S = M35 Satin Molding
M13S = M13 Satin Molding	M35G = M35 Gold Molding
M13G = M13 Gold Molding	PLT = Platinum Paint

HL SHELF

- Heavy Duty option
- Taller bracket profile allows 40% higher load capacity
- Tag moldings and perforations similar to TL Style
- Can order with Aluminum Tag Moldings installed
- Drop-in bracket design



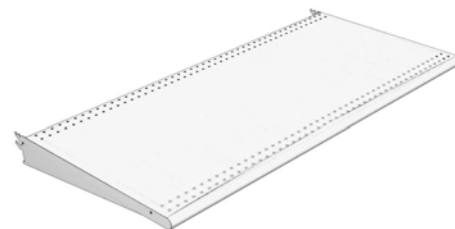
LBS 600 lbs evenly distributed (16", 19", 28", 31"D)
700 lbs evenly distributed (22" & 25"D)

Example Part #: **HL 4 19 N PLT**

1. **HL Shelf: HL**
2. **Width:** 2', 30", 3', 4'
3. **Depth:** 16", **19"**, 22", 25", 28", 31"
4. **Molding:** **N**, M13S, M13G, M35S, M35G
5. **Standard Finish:** **PLT**, Optional Catalog Colors

BULLNOSE SHELF

- 1 1/4" rounded front and rear
- Angular adjustment: flat or 17° downslope
- Perforation Options: Unpunched or Standard perforations
- Standard perforations accept most shelf accessories with two rows of 1/4" diameter holes 1" on center



Example Part #: **BNL 4 16 UP N PLT**
1. 2. 3. 4. 5. 6.

1. **Bullnose Shelf: BNL**
2. **Width:** 06", 1', 16", 18", 2', 28", 30", 3', 42", **4'**
3. **Depth:** 07", 10", 12", 14", **16"**, 19", 22", 25", 28", 31"
4. **Perforation Option:** **UP**, Omit for punched
5. **Molding:** **N**
6. **Standard Finish:** **PLT**, Optional Catalog Colors



Lbs evenly distributed

WIDTH	DEPTH							
	07"	10"	12"	14"	16"	19"	22" & 25"	28" & 31"
48"	130	180	220	260	290	350	400	300

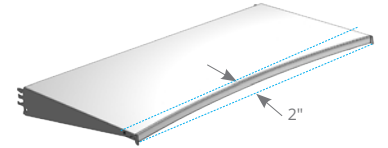
Reduce load capacity by 50% for 17° downslope position
Reduce load capacity by 30% when front loaded

SUFFIX KEY

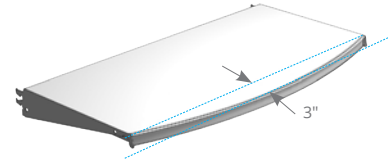
N = No Molding	M35G = M35 Gold Molding
M13S = M13 Satin Molding	PLT = Platinum Paint
M13G = M13 Gold Molding	UP = Unpunched (no perforations)
M35S = M35 Satin Molding	

RADIUS SHELVES

- Use to create focal point mid-run or on End Displays
- Radius Shelves have multiple position, drop-in bracket design
- Outward Radius Front projects 3", Inward Radius Front recesses 2"
- 1.235"H Tag Molding and unpunched top
- Compatible with Standard Base Fronts and Radius Base Fronts



RSI_= INWARD RADIUS SHELF



RSO_=OUTWARD RADIUS SHELF

Example Part # :	RSI	4	16	02	N	PLT
	1.	2.	3.	4.	5.	6.

1. **Radius Shelf:** RSI, RSO
2. **Width:** 2', 30", 3', 4'
3. **Bracket Depth:** 10", 13", **16"**, 19", 22", 25", 28", 31"
4. **Projection:** **02"** (Inward Only), 03" (Outward Only)
5. **Molding:** N
6. **Standard Finish:** PLT, Optional Catalog Colors

 55 lbs/sq.ft. up to 400 lbs evenly distributed, flat position

COVERED SHELVES

- DL Style Shelf covered with plastic laminate
- Laminated top with painted shelf body
- Must include MR1 Molding

Example Part # :	DL	4	10	MR1S	LAX	PLT
	1.	2.	3.	4.	5.	6.

1. **Shelf:** DL
2. **Section Width:** 3', 4'
3. **Depth:** 7", **10"**, 13", 15", 16", 17", 19", 20", 22", 25", 28", 31"
4. **Molding:** MR1S, MR1G
5. **Top Standard Laminate:** LAX, Optional Catalog Laminates
6. **Shelf Standard Finish:** PLT, Optional Catalog Colors



SUFFIX KEY

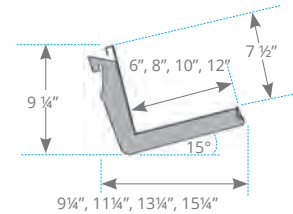
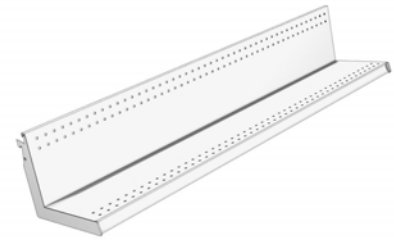
PLT = Platinum Paint	MR1S = MR1 Satin Molding
RSI = Inward Radius Shelf	MR1G = MR1 Gold Molding
RSO = Outward Radius Shelf	LAX = Platinum Laminate

BOOK SHELF

- Shelf perforations accept Steel Shelf Product Retainer or Book Divider Rods
- Order Divider Rods separately

Example Part # : **BK 4 12 PLT**

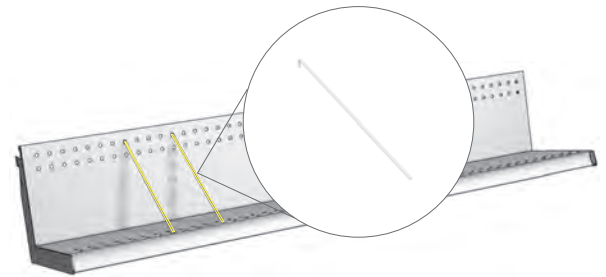
1. **Book Shelf: BK**
2. **Section Width: 2', 3', 4'**
3. **Depth: 6", 8", 10", 12"**
4. **Standard Finish: PLT**, Optional Catalog Colors



LBS 150 lbs evenly distributed

BOOK SHELF DIVIDER RODS

Part #	Standard Finish
6" L : HS1771	ZNC
8" L : HS1772	
10" L : HS1773	
12" L : HS1774	



SUFFIX KEY

PLT = Platinum Paint

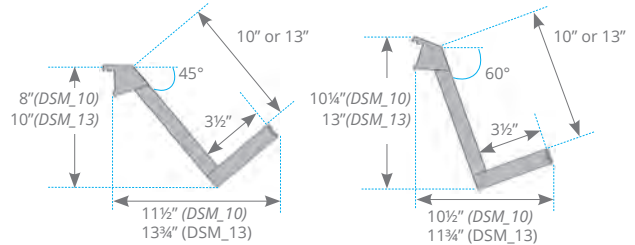
ZNC = Zinc Plated

DOWNSLANT SHELF

- Angular adjustment: 45° or 62°

Example Part #: **DSM 4 10 M PLT**

- Downslant Shelf: **DSM**
- Width: 3', 4'
- Depth: 10", 13"
- No Molding: **M**
- Standard Finish: **PLT**, Optional Catalog Colors



Evenly distributed load of 150 lbs

APPAREL SHELF

- Metal Shelf Frame with integrated 3/4" thick wood insert
- Wood insert available with laminate or melamine top surface
- Tilt-in brackets, flat position only
- Provides three ways to merchandise product: Folded on shelf surface, face out and shoulder out
- 1 hangrod on 2', 30" & 3' widths, 2 hangrods on 4' widths

Example Part #: **APS 4 13 2 N PLT LAX**

1. 2. 3. 4. 5. 6. 7.

- Apparel Shelf: **APS**
- Width: 2', 30", 3', 4'
- Depth: 10", 13", 16", 19", 22"
- Quantity of Full Depth Hangrails: 1, 2
- No Molding: **N**
- Shelf Body Color Standard Finish: **PLT**, Optional Catalog Colors
- Wood Insert Standard Color: **LAX**, Optional Catalog Laminates, MA1, MA5



SIDE VIEW



Hanging full width: Evenly distributed load of 25lbs
Hanging full depth: Evenly distributed load of 25lbs
Evenly distributed load of 175lbs. Total for shelf

SUFFIX KEY

PLT = Platinum Paint

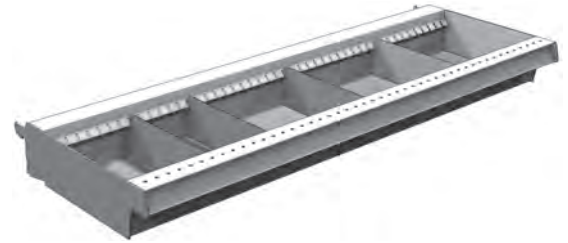
MA1 = Platinum Melamine

LAX = Platinum Laminate

MA5 = White Melamine

BIN SHELF

- 3"H
- Angular adjustment: flat or 17° downslant
- 1.235" Tag Molding
- Dividers adjustable 1" on centers
- Order Dividers separately



SIDE VIEW

Example Part #: **BIN 4 10 N PLT**

1. **Bin Shelf: BIN**
2. **Section Width: 4'**
3. **Tray Depth: 10", 16"**
4. **Molding: N**
5. **Standard Finish: PLT**, Optional Catalog Colors



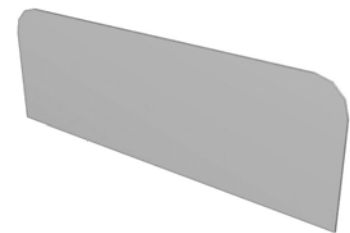
Evenly distributed load of 300 lbs (flat position)

TRAY DEPTH	OVERALL TRAY DEPTH	DIVIDER SIZE
10	10 1/2"	6"
16	16 1/4"	12"

BIN SHELF DIVIDERS

Example Part #: **BIN 06 D PLT**

1. **Bin Shelf: BIN**
2. **Length: 06", 12"**
3. **Divider: D**
4. **Standard Finish: PLT**, Optional Catalog Colors



SUFFIX KEY

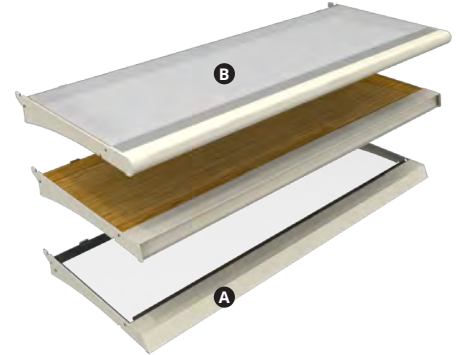
PLT = Platinum Paint

SHELF FRAME ASSEMBLY

- Shelf Frame available in three styles: 1.235" Tag Front, Bullnose or No Tag
- Tilt-in brackets, flat position only
- Interchangeable insert available in three styles: Tempered glass, Lucite 2447 White Acrylic or Hardboard
- Compatible with LED and T5 lights
- Compatible with Door Kits

INCLUDES

- A** Shelf Frame
- B** Shelf Frame Insert
 - Shelf Frame Stiffener (if needed)
 - Shelf Frame Door Kit Angle (if needed)



Example Part #:	SF	T	S	D	4	19	N	XB7	PLT
	1.	2.	3.	4.	5.	6.	7.	8.	9.

- Shelf Frame Assembly: SF**
- Frame Style: T, B, N**
- Stiffener Required: S, N**
- Attaching to Door Kit?: D, N**
- Section Width: 06", 12", 16", 18", 2', 30", 3', 4'**
- Depth: 10", 13", 16", 19"**
- Molding: N, M13S, M13G, M35S, M35G, Omit for Bullnose or No Tag Styles**
- Insert Finish: CLR, XB7, IA1, PLT**
- Frame, Stiffener and Angle Standard Finish: PLT, Optional Catalog Colors**

LBS Lbs evenly distributed

DEPTH	WIDTH		
	24"	36"	48"
10"	40	60	75
13"	50	75	100
16"	65	95	125
19"	75	110	150

SUFFIX KEY

T = 1.235" Tag Front	M13S = M13 Satin Molding
B = Bullnose	M13G = M13 Gold Molding
N = No Tag (Line #2)	M35S = M35 Satin Molding
S = Yes Stiffener	M35G = M35 Gold Molding
N = No Stiffener (Line #3)	CLR = Clear Glass
D = Yes attaching to Door Kit	XB7 = Lucite 2447 White Acrylic
N = No Door Kit (Line #4)	IA1 = Oak Melamine
N = No Molding (Line #7)	PLT = Platinum Paint

SHELF FRAME

- Available in three styles: 1.235" Integral Tag Front, Bullnose or No Tag

Example Part #: **TLF 4 19 N PLT**

1. **Shelf Frame:** TLF, BNF, NLF
2. **Section Width:** 06", 12", 16", 18", 2', 30", 3', **4'**
3. **Depth:** 10", 13", 16", **19"**
4. **Molding:** N, M13S, M13G, M35S, M35G, Omit for Bullnose or No Tag Styles
5. **Standard Finish:** PLT, Optional Catalog Colors



TLF=1.235 TAG FRONT



BNF=BULLNOSE



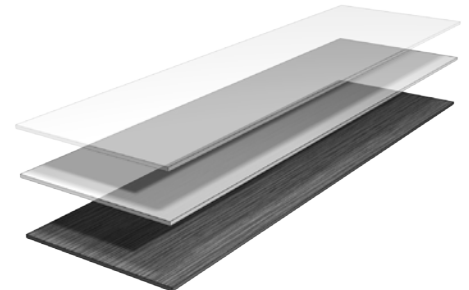
NLF=NO TAG FRONT

SHELF FRAME INSERT

- Available in three styles: Tempered Glass, Lucite 2447 White Acrylic, Hardboard

Example Part #: **FI 4 19 PLT**

1. **Frame Insert:** FI
2. **Section Width:** 06", 12", 16", 18", 2', 30", 3', **4'**
3. **Depth:** 10", 13", 16", **19"**
4. **Standard Finish:** CLR, XB7, PLT, IA1, Optional Catalog Colors



 Contact local sales representative for optional woodgrain melamines

SUFFIX KEY

TLF = 1.235" Integral Tag Front Shelf Frame	M35S = M35 Satin Molding
BNF = Bullnose Shelf Frame	M35G = M35 Gold Molding
NLF = No Tag Front Shelf Frame	PLT = Platinum Paint
N = No Molding	CLR = Clear Glass
M13S = M13 Satin Molding	XB7 = Lucite 2447 White Acrylic
M13G = M13 Gold Molding	IA1 = Oak Melamine

SHELF FRAME STIFFENER

- Included for reduced deflection
- Required with acrylic and hardboard inserts 19" deep on 3' Frames
- Required with acrylic and hardboard inserts 16" and 19" deep on 4' Frames
- Not compatible with Shelf Frames smaller than 16" deep

Example Part # : **SFS 4 PLT**

1. **Shelf Frame Stiffener: SFS**
2. **Width:** 06", 12", 16", 18", 2', 30", 3', **4'**
3. **Standard Finish: PLT**, Optional Catalog Colors

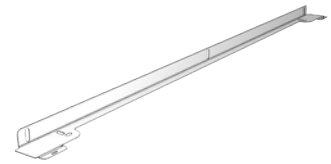


SHELF FRAME DOOR KIT ANGLE

- Required to attach Door Kit to Frame
- Creates a streamline attachment between Shelf Frame and Door Kit

Example Part # : **DKSF 4 PLT**

1. **Shelf Frame Door Kit Angle: DKSF**
2. **Section Width:** 06", 12", 18", 2', 30", 3', **4'**
3. **Standard Finish: PLT**, Optional Catalog Colors



FEATURE SHELF

- Feature Shelves install on 1"x2" tubular Feature Shelf Bar
- 1.235" Tag Molding and standard top perforation
- Order Shelves and Bars separately
- Overall projection matches standard Shelf depth

Example Part # : **FS 24 13 N PLT**

1. **Feature Shelf: FS**
2. **Section Width: 24"**
3. **Depth: 13"**, 16"
4. **Molding: N**
5. **Standard Finish: PLT**, Optional Catalog Colors



Evenly distributed load of 75 lbs

48"W FEATURE SHELF BAR

Example Part # : **FSB48 PLT**

1. **48"W Feature Shelf Bar: FSB48**
2. **Standard Finish: PLT**, Optional Catalog Colors

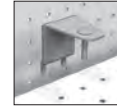
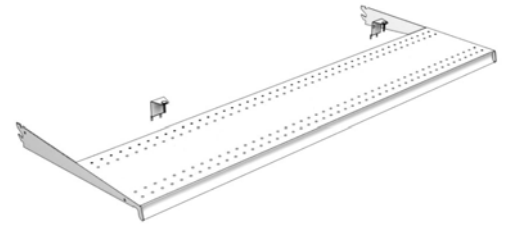


SUFFIX KEY

PLT = Platinum Paint

TL-STYLE EXTENDED SHELF ASSEMBLY

- Mounting Brackets attach to Extended Peg Panels
- Recommend two Shelves minimum per Panel
- To add Aluminum Tag Molding, replace "N" at end of Shelf part number with Molding style
- Order Extended Pegboard Panel separately



MOUNTING BRACKETS

INCLUDES

- A** 1 Shelf
- B** 2 Zinc Mounting Brackets

Example Part # :	TXP	4	10	19	N	PLT
	1.	2.	3.	4.	5.	6.

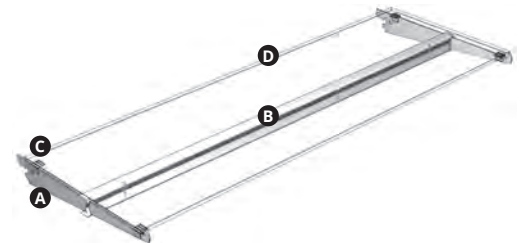
1. **TL-Style Extended Shelf Assembly: TXP**
2. **Width: 4'**
3. **Shelf Top Depth: 10"**
4. **Bracket Depth: 19", 22"**
5. **Molding: N, M13S, M13G, M35S, M35G**
6. **Standard Finish: PLT, Optional Catalog Colors**

GLASS SHELF ASSEMBLIES

- Installs in flat position only

INCLUDES

- A** Two Brackets
- B** One Support Channel
- C** Four Clear Clips
- D** 1/4" tempered clear glass Shelf Top, polished edges



Evenly distributed load of 125 lbs

Example Part # :	GSA	4	08	T	PLT
-------------------------	------------	----------	-----------	----------	------------

1. **Glass Shelf Assembly: GSA**
2. **Width: 3', 4'**
3. **Depth: 08", 10", 12", 14", 16", 18"**
4. **Tempered Glass: T**
5. **Shelf Assembly & Frame Standard Finish: PLT, Optional Catalog Colors**

SUFFIX KEY

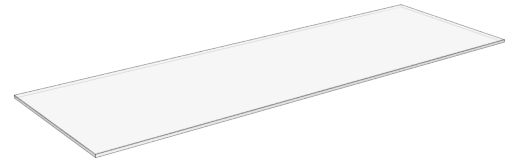
N = No Molding	M35S = M35 Satin Molding
M13S = M13 Satin Molding	M35G = M35 Gold Molding
M13G = M13 Gold Molding	PLT = Platinum Paint

GLASS SHELF ASSEMBLY TOP

• Actual dimensions: Subtract 1/8" from nominal width and 1/16" from nominal depth.

Example Part #: **SG 4 08 T CLR**

1. **Glass Shelf Top: SG**
2. **Width: 3', 4'**
3. **Depth: 08", 10", 12", 14", 16", 18"**
4. **Tempered Glass: T**
5. **Glass Standard Finish: CLR**



GLASS SHELF ASSEMBLY FRAME

Example Part #: **GSF 4 08 PLT**

1. **Glass Shelf Frame: GSF**
2. **Width: 3', 4'**
3. **Depth: 08", 10", 12", 14", 16", 18"**
4. **Frame Standard Finish: PLT, Optional Catalog Colors**



GLASS SHELF ASSEMBLY BRACKETS

Part #	Standard Finish
8" L: SG1111	PLT, Optional Catalog Colors
10" L: SG1112	
12" L: SG1113	
14" L: SG1114	
16" L: SG1115	
18" L: SG1116	



GLASS SHELF ASSEMBLY SUPPORT CHANNEL

Part #	Standard Finish
3' L: SG1251	PLT, Optional Catalog Colors
4' L: SG1252	



SUFFIX KEY

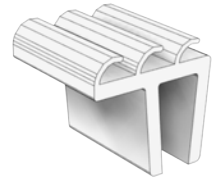
PLT = Platinum Paint

CLR = Clear Glass

GLASS SHELF ASSEMBLY CLIPS

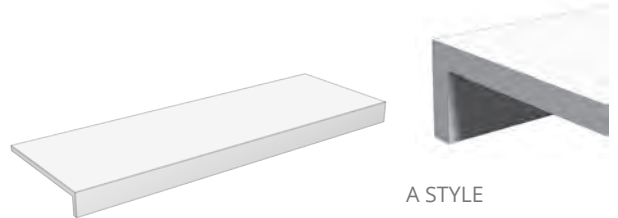
Part #: **SG1591 VG4**

1. Glass Shelf Clips: **SG1591**
2. Standard Finish: **VG4**



LAMINATED WOOD SHELVES

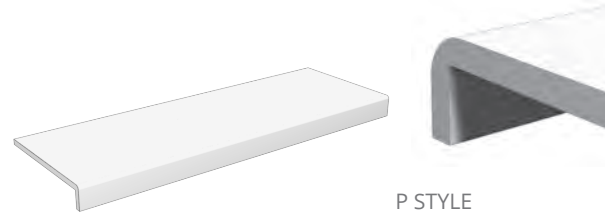
- Order one pair of Brackets (MPB or MPBF) for each section
- A Style: Front drop lip with square edge
- P Style: Front drop lip with rounded edge
- Drop Lips: 3 5/16" H



A STYLE

Example Part #: **LWS A 3 16 LAX**

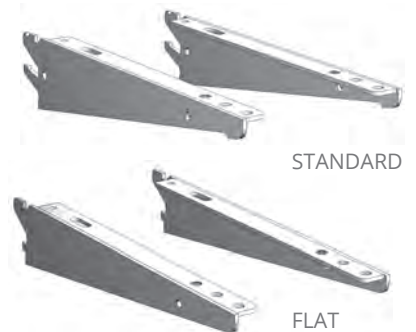
1. Laminated Wood Shelves: **LWS**
2. Style: **A, P**
3. Length: **3'-24'** (even foot increments)
4. Depth: **13", 16", 19", 22", 25"**
5. Standard Finish: **LAX**, Optional Catalog Laminates



P STYLE

MULTI-PURPOSE BRACKETS

- Supports Laminated Shelves and Counters
- Standard version installs at 1.5° up, 17° or 30° down
- Flat version installs at 0° only
- Actual length: face of Uprite to end of bracket



STANDARD

FLAT

Actual Length	Standard Bracket Part # :	Flat Bracket Part # :	Standard Finish
6 1/8"	MPB7	--	PLT, Optional Catalog Colors
9 1/8"	MPB10	MPBF10	
11 1/8"	MPB13	MPBF13	
14 1/8"	MPB16	MPBF16	
17 1/8"	MPB19	MPBF19	
20 1/8"	MPB22	--	
23 1/8"	MPB25	--	

SUFFIX KEY

VG4 = Clear PVC

LAX = Platinum Laminate

A = A Style Wood Shelf

PLT = Platinum Paint

P = P Style Wood Shelf

SHELF BRACKET (FOR SLOTWALL)

- Use for 12" glass, acrylic or wood Shelves
- 2" back plate

Part #: **SWSB12 PCP**

1. Shelf Bracket: **SWSB12**
2. Standard Finish: **PCP**



DROP-IN WIRE SHELVES

- One-piece design
- Drop-in Bracket design
- Angular adjustment: flat, 17° or 30° downslope positions
- 15° upslope (except 22"D)
- Either 1" or 1/2" wire spacing



Example Part #: **DW 4 16 W1 CHR**

1. Drop-In Wire Shelf: **DW**
2. Width: 3', 4',
3. Depth: **16"**, 19", 22"
4. Wire Spacing: **W1**, W2
5. Standard Finish: **CHR**, Optional Catalog Colors



Evenly distributed load of 500 lbs

SUFFIX KEY

PCP = Polished Chrome Plated

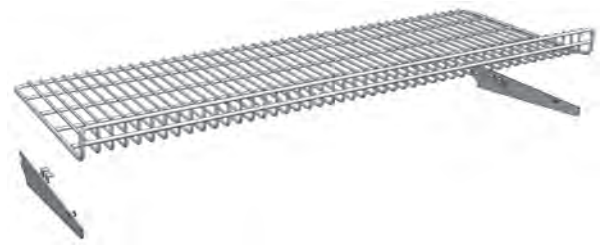
W2 = 1/2" Wire Spacing

W1 = 1" Wire Spacing

CHR = Charcoal Black Paint


REVERSIBLE WIRE SHELVES

- Consists of 5/16" wire on 1" centers
- Installed with 2 3/4" lip at front or rear
- Angular adjustment: flat or 17°
- Brackets are included and shipped separately
- Molding holder available



Example Part # :	RBS	4	18	U	QS9	PLT
	1.	2.	3.	4.	5.	6.

1. **Reversible Wire Shelf: RBS**
2. **Section Width: 3', 4'**
3. **Depth: 15", 18", 21", 24"**
4. **Unit: U**
5. **Shelf Standard Finish: QS9, PLT, BCP**
6. **Bracket Standard Finish: PLT, Optional Catalog Colors, QS9, BCP**

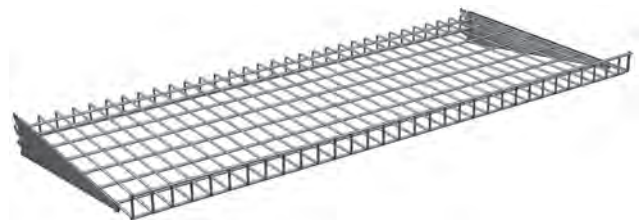
 Evenly distributed load of 150 lbs (in flat position)

SNACK SHELF

- One-piece Wire Shelf
- Angular adjustment: flat or 17° downslant position
- Tilt-in style Bracket
- 2"H lip-up on front of shelf
- Molding holders available

Example Part # : **WG5971 PLT**

1. **22"D X 48"W Snack Shelf: WG5971**
2. **Standard Finish: PLT, Optional Catalog Colors**



 Evenly distributed load of 50 lbs (flat position)

SUFFIX KEY

QS9 = Powder Brass Finish

BCP = Chrome Plated

PLT = Platinum Paint Finish

CONTINUOUS WIRE BASKETS

- 8"H back and 6"H sloped front
- Reversible when Brackets are in downslant position
- Angular adjustment: flat or 17° downslant position
- Brackets are included and shipped separately
- Molding holder available
- Order Dividers separately



Example Part # : **CWB** **4** **19** **U** **BCP** **PLT**
 1. 2. 3. 4. 5. 6.

1. **Continuous Wire Basket: CWB**
2. **Shelf Width: 3', 4'**
3. **Shelf Depth: 13", 16", 19", 22"**
4. **Unit: U**
5. **Shelf Standard Finish: BCP**, Optional Catalog Colors
6. **Bracket Finish: PLT**, Optional Catalog Colors, Optional BCP



Evenly distributed load of 400 lbs (in flat position)

OVERALL DEPTH	BOTTOM DEPTH
15 1/2"	13"
18 1/2"	16"
21 1/2"	19"
24 1/2"	22"

CONTINUOUS WIRE BASKET DIVIDERS

Example Part # : **CWB** **19** **D** **BCP**

1. **Continuous Wire Basket: CWB**
2. **Shelf Depth: 13", 16", 19", 22"**
3. **Divider: D**
4. **Shelf Standard Finish: BCP**, Optional Catalog Colors



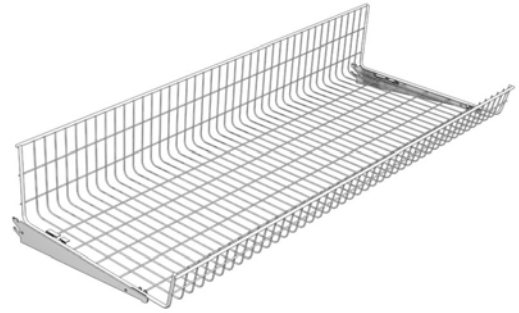
SUFFIX KEY

PLT = Platinum Paint

BCP = Chrome Plated

ENDLESS WIRE BASKET

- Reversible when Brackets are in downslant position
- 8"H Back and 4"H sloped Front
- Angular adjustment: flat or 17°
- Brackets are included and shipped separately
- Molding holder available



Evenly distributed load of 200 lbs

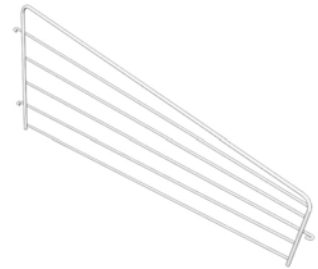
Example Part # :	EWB	4	19	U	ZNC	PLT
	1.	2.	3.	4.	5.	6.

1. **Endless Wire Basket: EWB**
2. **Shelf Width: 3', 4'**
3. **Shelf Depth: 13", 16", 19"**
4. **Unit: U**
5. **Shelf Standard Finish: ZNC**
6. **Bracket Finish: PLT**, Optional Catalog Colors, Optional BCP

ENDLESS WIRE BASKET DIVIDERS

Example Part # :	EWB	19	D	ZNC
-------------------------	------------	-----------	----------	------------

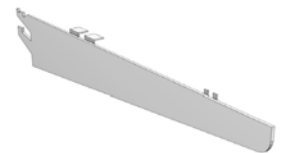
1. **Endless Wire Basket: EWB**
2. **Shelf Depth: 13", 16", 19"**
3. **Divider: D**
4. **Shelf Standard Finish: ZNC**



EXTRA WIRE SHELF/BASKET BRACKETS

- Sold in pairs only
- Angular adjustment: flat or 17°

Wire Shelf Depth	Wire Basket Depth	Part #	Standard Finish
-	13"	MPBW13	PLT , Optional Catalog Colors, QS9, BCP
15"	16"	MPBW16	
18"	19"	MPBW19	
21"	22"	MPBW22	
24"	-	MPBW25	



SUFFIX KEY

ZNC = Zinc Plated

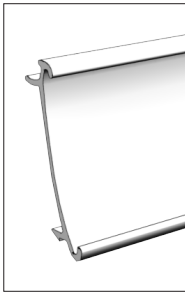
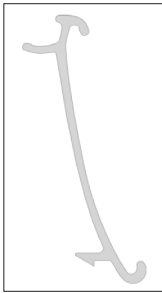
QS9 = Powder Brass

PLT = Platinum Paint

BCP = Chrome Plated

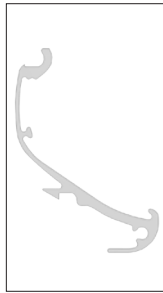
ALUMINUM TAG MOLDING

- To order Shelves and Decks with Moldings attached: Replace "N" at the end of the Shelf or Deck number with desired Molding part number, omitting last two characters (Ex: 4L)
- To order Molding for field installation, use part number examples on this page



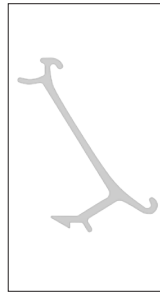
M13

- Holds both 1.235" and 1.250" price tags



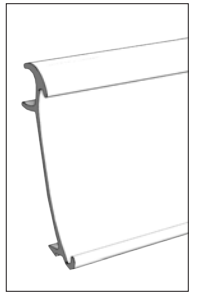
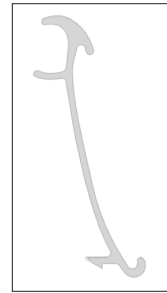
M55

- Holds both 1.235" and 1.250" price tags up at 55° angle
- Requires Extended Base End Trims to cover the ends of the Molding



M35

- Holds both 1.235" and 1.250" price tags up at 35° angle



MR1

- Holds both 1.235" and 1.250" price tags
- Has extended upper edge to retain shelf top coverings

Example Part #: **M13** **S** **4** **L** **SAT**

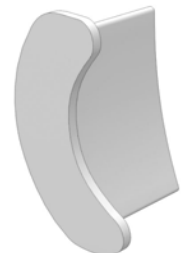
1. **Molding Type:** M13, M55, M35, MR1
2. **Standard Finish:** S, G
3. **Shelf Width:** 3', 4'
4. **Shelf or Deck:** L, S
5. **Standard Finish:** SAT, GOL

MOLDING END TRIM

- Provides protection from exposed Shelf corners
- Snaps into S-Style Shelf Molding and Aluminum Tag Molding

Part #: **MET** **XB5**

1. **Molding End Trim:** MET
2. **Standard Finish:** XB5



SUFFIX KEY

S = Satin Finish (Aluminum Tag Molding Line #2)

SAT = Satin Finish

G = Gold Finish (Not available for M55L)

GOL = Gold Finish (Not available for M55L)

L = TL, DL, and HL Style Shelves

XB5 = Plastic Butyrate, Clear

S = S Style Decks (Aluminum Tag Molding Line #4)

TAG PROTECTORS

- Clear plastic cover
- 24"L

Part #: **HS2461 XB5**

1. **Tag Protectors: HS2461**
2. **Standard Finish: XB5**

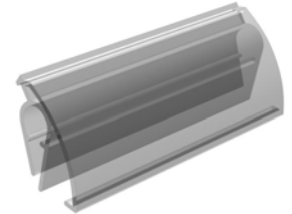


TICKET HOLDERS

- 2 7/8"L
- Snaps onto all standard Lozier Shelving and Binning
- Accepts: 0.875" - 1.235" tags/tickets

Part #: **HS2441 XB5**

1. **Ticket Holders: HS2441**
2. **Standard Finish: XB5**

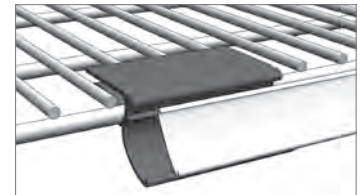


WIRE BASKET/SHELF MOLDING HOLDER

- PTM3V: Clips to lip of Continuous & Endless Wire Basket and Reversible Bakery Shelf
- PTM3H: Clips to horizontal flat edge of Reversible Bakery Shelf
- 3" holder will hold 1.235" tags or M13 Aluminum Molding (order separately)
- Four clips per 4'L molding
- Three clips per 3'L molding



PTM3V



PTM3H

Part #:

Standard Finish

Wire Basket Molding Holder: **PTM3V**

Reversible Bakery Shelf Molding Holder: **PTM3H**

VG4

PLASTIC PRICE TAG MOLDING (FOR DROP-IN WIRE SHELF)

- Clear Price Tag Holder snaps in place
- Product retainer lip
- Holds both 1.235" and 1.250" tags at 35° angle
- 1 1/4" height

Example Part #: **PTHDR 48 XA5**

1. **Plastic Tag Holder: PTHDR**
2. **Width: 3", 36", 48"**
3. **Standard Finish: XA5**





SUFFIX KEY

XB5 = Plastic Butyrate, Clear

XA5 = Plastic Acrylic, Clear

VG4 = Clear PVC

QUICK CONNECT

- Max lights per driver: seven 4' or ten 3' fixtures (horizontal or vertical placement)
- “Plug and play” system enables you to connect Drivers together, minimizing number of outlets needed
- Easily retrofits to existing fixtures
- Illuminates up to 125-4' or 160-3' shelves on a single 15 amp circuit
- Universal polarity connection allows for the connector to hook to the power strip in any orientation
- LED life rated to 100,000 hours (tested to the LM-80 standard, approved by the Illuminating Society of North America [IESNA])
- LM-79 tested by DOE qualified, verified and recognized testing laboratory
- Plastic parts made from self-extinguishing UL94 V-0 material
- Energy Star certified 
- All component parts are UL, ULC, and CE certified 

QUICK CONNECT LED LIGHT

- Secures to underside of Shelf via high-strength, rare earth magnets
- 370 lumens/FT minimum
- 4000K-Neutral Color Temperature
- Typical Color Rendering Index (CRI)-85
- 110 degree LED beam spread
- Standard power: 3.3 watts/foot
- Efficiency: 113 lumens/watt



Part # :	Standard Finish
36" L: LKQC3LED4000	N/A
48" L: LKQC4LED4000	

QUICK CONNECT POWER TRACK

- Power Track can be cut in field for various lengths
- Power Track slides onto Upright side rail

Example Part # : **LKQCT96 XG9**

1. **96"L Power Track: LKQCT96**
2. **Standard Finish: XG9, XG4, XM4**



SUFFIX KEY

N/A = No Finish

XG4 = Black

XG9 = White

XM4 = Beige

QUICK CONNECT HARNESS CONNECTOR

- Connects Lights to Power Track
- One 1/8" Cord Management Clip ships with each harness



Part # :	Standard Finish
22" L: LKQCH22	XG9, XG4
31" L: LKQCH31	

QUICK CONNECT DRIVER-VERTICAL AND HORIZONTAL APPLICATIONS

- 9" Lead and 84" Cord Length
- Self-regulating feature prevents overloading
- Can connect with other Drivers, minimizing number of outlets needed
- 24VDC operation
- Connects to Power Track
- Use for both vertical and horizontal applications



Part # : LKQCPS84LED N/A

1. Quick Connect Driver: LKQCPS84LED
2. Standard Finish: N/A

QUICK CONNECT DRIVER-HORIZONTAL APPLICATIONS

- 120" Lead and 84" Cord Length
- Self-regulating feature prevents overloading
- Can connect with other Drivers, minimizing number of outlets needed
- 24VDC operation
- Connects directly to first light in horizontal run of shelves
- Use for horizontal applications only
- Do not use with multiple lights per section



Part # : LKQCPD84LED N/A

1. Quick Connect Driver: LKQCPD84LED
2. Standard Finish: N/A

SUFFIX KEY

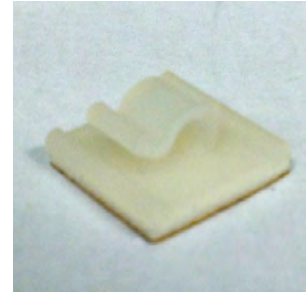
XG9 = White

N/A = No Finish

XG4 = Black

QUICK CONNECT LED CORD MANAGEMENT CLIP

- Translucent, white nylon
- Adhesive back
- 1/8" capacity



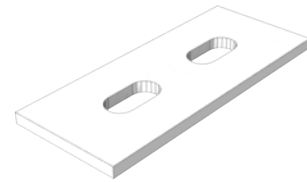
Part # : LKCORDCLIPA N/A

1. Quick Connect Cord Management Clip: LKCORDCLIPA
2. Standard Finish: N/A

QUICK CONNECT LED WOOD SHELF CLIP

- Screws to bottom of Wood Shelf
- 2 Clips per Light
- Align with magnets on underside of Lights

Part # : LKQCWCLED N/A



1. Quick Connect Wood Shelf Clip: LKQCWCLED
2. Standard Finish: N/A

QUICK CONNECT PEGBOARD BACK ADAPTER

- Installs in any Pegboard back with 1" on center holes (1/4" diameter)
- Design replicates profile of Lozier Upright Side Rail
- Use when Power Track needs to be installed on a non-Lozier fixture



Example Part # : LKQCPBA XG9

1. Quick Connect Pegboard Back Adapter: LKQCPBA
2. Standard Finish: XG9, XG4

SUFFIX KEY

N/A = No Finish

XG4 = Black

XG9 = White

T5 LIGHT KIT

- Slimline Fixture with magnetic attachment
- No hard wiring required
- Maximum of 10 Light Kits per Power Supply
- T5 Micro Fluorescent includes 4100K Light tube and cover
- UL Approved
- Order Power Supply separately (below)
- Multiple Lights require Connectors (order separately below)
- Order optional Wood Shelf Attachment Clip separately (next page)
- Order optional Cord Management Clips and extra Light Tubes separately (next page)



Example Part # : LK 4 T5 4100 N/A

1. **T5 Light Kit: LK**
2. **Width: 3', 4'**
3. **Micro Fluorescent: T5**
4. **Natural White Color Temperature: 4100**
5. **Standard Finish: N/A**

T5 POWER SUPPLY

- 72" Long
- 3-Prong Power Supply for standard 110 outlet
- No hard wiring required



Part # : LKPS72T5 N/A

1. **T5 Power Supply: LKPS72T5**
2. **Standard Finish: N/A**

T5 LIGHT KIT CONNECTOR

- Use with T5 Light when connecting multiple lights
- Available in several lengths
- No hard wiring required



Example Part # : LKC 24 T5 N/A

1. **T5 Light Kit Connector: LKC**
2. **Length: 6", 24", 30", 36"**
3. **Micro Fluorescent: T5**
4. **Standard Finish: N/A**

SUFFIX KEY

N/A = No Finish

T5 LIGHT TUBE

- Replacement T5 fluorescent tube

Example Part # : LKT 4 T5 4100

1. **T5 Light Kit Tube: LKT**
2. **Width: 3', 4'**
3. **Micro Fluorescent: T5**
4. **Color Temperature: 4100**



T5 CORD MANAGEMENT CLIP

- Translucent white nylon
- Adhesive back
- 3/8" capacity

Part # : LKCORDCLIP N/A

1. **T5 Cord Management Clip: LKCORDCLIP**
2. **Standard Finish: N/A**



T5 WOOD SHELF CLIP

- Use to attach Light Kit to wood Shelf

Part # : LKWCT5 N/A

1. **T5 Wood Shelf Clip: LKWCT5**
2. **Standard Finish: N/A**



SUFFIX KEY

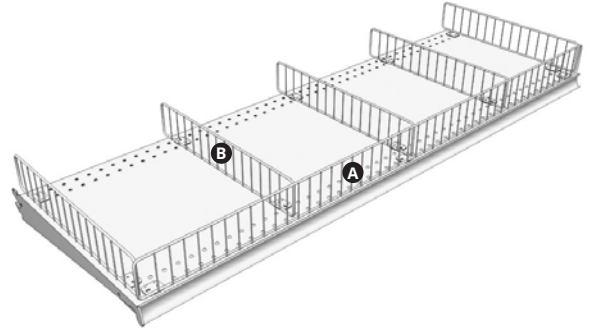
N/A = No Finish

STANDARD WIRE FENCING

- Foot attachment creates tension allowing Fronts and Divider to be used independently
- Vertical wires on 1" centers

COMPONENTS

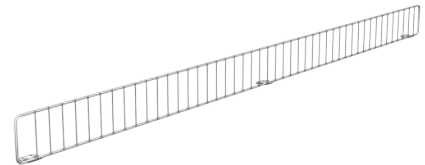
- A** Fronts
- B** Dividers



STANDARD WIRE FENCING FRONT

Example Part # : SWF 4 3 ZNC

1. Standard Wire Fencing Fronts: SWF
2. Shelf Width: 3', 4'
3. Height: 3", 6"
4. Standard Finish: ZNC

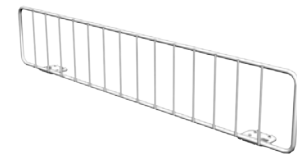


STANDARD WIRE FENCING DIVIDER

- Actual Divider length is approximately 2 3/4" less than nominal shelf depth

Example Part # : SWD 3 13 ZNC

1. Standard Wire Fencing Divider: SWD
2. Height: 3", 6"
3. Shelf Depth: 13", 15", 16", 17", 19", 22"
4. Standard Finish: ZNC



SUFFIX KEY

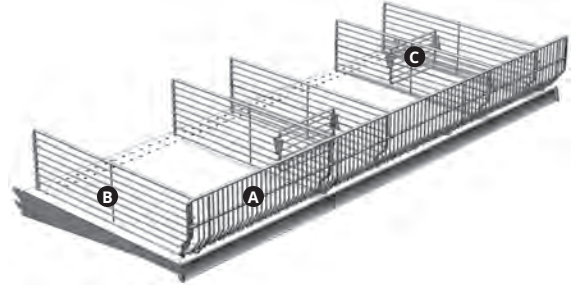
ZNC = Zinc Plated

WIRE BINNING

- Fronts and Dividers lock together to create rigid system
- Vertical wires on 1/2" centers, Horizontal wires on 5/8" centers
- Use 5"H Dividers with either 3"H or 5"H Fronts, 7"H Dividers with either 5"H or 7"H Fronts
- Wire Binning series not interchangeable with Freestanding series wire
- 7"H wire available ONLY in BCP
- WBF37, BFD510, BFD710, and BFD713 are NOT available

COMPONENTS

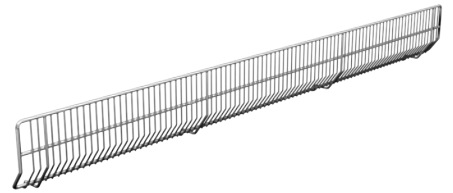
- A** Fronts
- B** Dividers
- C** Cross Dividers



WIRE BINNING FRONT

Example Part #: **WBF 4 3 BCP**

1. **Wire Binning Front: WBF**
2. **Shelf Width: 3', 4'**
3. **Height: 3", 5", 7"**
4. **Standard Finish: BCP**, Optional Catalog Colors

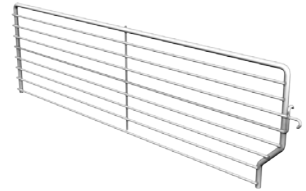


WIRE BINNING DIVIDER

- Actual Divider length across the top is approximately 1/2" less than nominal length

Example Part #: **BFD 3 10 BCP**

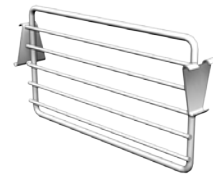
1. **Wire Binning Divider: BFD**
2. **Height: 3", 5", 7"**
3. **Shelf Depth: 10", 13", 15", 16", 17", 19", 22", 25"**
4. **Standard Finish: BCP**, Optional Catalog Colors



WIRE BINNING CROSS DIVIDER

Example Part #: **BFCD 3 04 BCP**

1. **Wire Binning Cross Dividers: BFCD**
2. **Height: 3"**
3. **Width: 04", 06", 08", 10"**
4. **Standard Finish: BCP**, Optional Catalog Colors



SUFFIX KEY

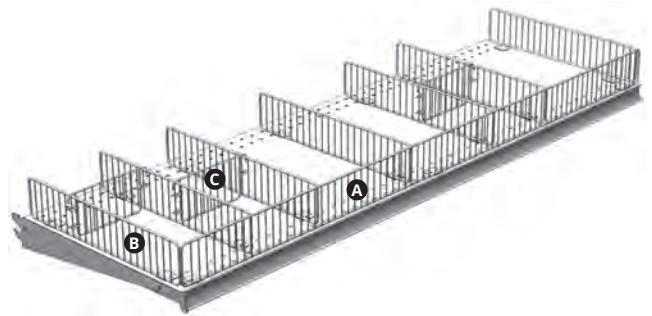
BCP = Chrome Plated

FREESTANDING WIRE

- Fronts and Dividers attach to shelf top and can be used independently
- Heavy gauge wire frame with vertical wire on 5/8" centers
- Freestanding series not interchangeable with Wire Binning series wire
- FSF26, FSD910, and FSD925 are NOT available

COMPONENTS

- A** Fronts
- B** Dividers
- C** Cross Dividers



FREESTANDING WIRE FRONT

Example Part #: **FSF 4 3 BCP**

1. **Freestanding Wire Fronts: FSF**
2. **Shelf Width: 2', 3', 4'**
3. **Height: 3", 6"**
4. **Standard Finish: BCP**, Optional Catalog Colors



FREESTANDING WIRE DIVIDER

- Actual Divider length is approximately 1 3/4" less than the shelf depth
- 9"H wire dividers available ONLY in BCP

Example Part #: **FSD 3 10 BCP**

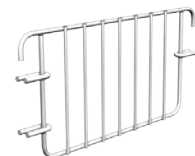
1. **Freestanding Wire Divider: FSD**
2. **Height: 3", 6", 9"**
3. **Shelf Depth: 10", 13", 15", 16", 17", 19", 22", 25"**
4. **Standard Finish: BCP**, Optional Catalog Colors



FREESTANDING WIRE CROSS DIVIDER

Example Part #: **FSCD 3 04 BCP**

1. **Freestanding Wire Cross Dividers: FSCD**
2. **Height: 3"**
3. **Width: 04", 06"**
4. **Standard Finish: BCP**, Optional Catalog Colors



SUFFIX KEY

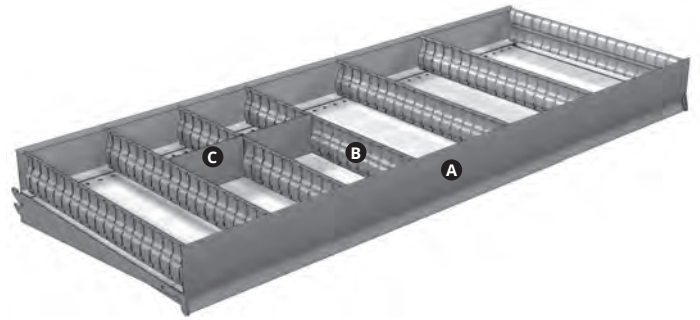
BCP = Chrome Plated

METAL BINNING

- 3"H
- Fronts and Dividers attach to Shelf perforations
- Dividers and Cross Dividers are adjustable in 1" increments

COMPONENTS

- A** Fronts
- B** Dividers
- C** Cross Dividers



METAL BINNING FRONT

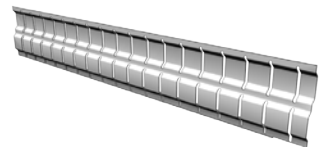
Example Part #: **HS1152 PLT**

1. **Metal Binning Front: HS1152**
2. **Standard Finish: PLT**, Optional Catalog Colors



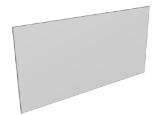
METAL BINNING DIVIDERS

Shelf Depth	Part #	Standard Finish
10"	HS1131	PLT , Optional Catalog Colors
13"	HS1132	
15"	HS1133	
16"	HS1134	
17"	HS1135	
19"	HS1137	
19"	HS1137	
22"	HS1138	



METAL BINNING CROSS DIVIDERS

Part #	Standard Finish
4" L: HS1121	PLT , Optional Catalog Colors
6" L: HS1122	



WIRE CAN DIVIDERS

- Fits all standard Lozier Shelves and Decks

Example Part #: **WCD 13 ZNC**

1. **Wire Can Divider: WCD**
2. **Shelf Depth: 7", 10", 13", 15", 16", 17", 19", 22", 25", 28", 31"**
3. **Standard Finish: ZNC**



SUFFIX KEY

PLT = Platinum Paint

ZNC = Zinc Plated

SHELF EXTENDER

- 10 1/4"W x 5 3/4"D
- 1/2"H lip serves as a product retainer
- Fits all standard Shelves
- Two plastic fasteners per unit included



Example Part #: **HS1111** **PLT**

1. **Shelf Extender: HS1111**
2. **Standard Finish: PLT**, Optional Catalog Colors

STEEL SHELF RETAINER

- 1"H
- Snaps into front or rear holes of all standard Shelves and Decks
- Snap fasteners included



Part #	Standard Finish
36" L: HS1251	PLT ,
48" L: HS1252	Optional Catalog Colors

SPOT LITE SHELF EXTENDER

- Attaches to all standard perforated Shelves and Decks
- Radius front accepts 1.235" tags
- Recommended for Light Duty applications
- See Radius Front Display Shelves and Decks for heavier load capacity applications

Example Part #: **SPOT 4 03** **PLT**

1. **Spot Lite Shelf Extender: SPOT**
2. **Shelf Width: 2', 30", 3', 4'**
3. **Projection: 03"**
4. **Standard Finish: PLT**, Optional Catalog Colors



 **25 lbs evenly distributed**

SUFFIX KEY

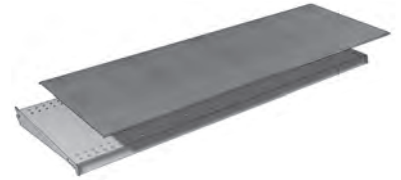
PLT = Platinum Paint

STAINLESS STEEL SHELF/DECK COVERS

- Protects Shelf and Deck tops from abrasive or corrosive products
- Hooks into tag molding and secures at rear with double sided tape

Example Part # : C 4 19 STS

1. **Stainless Steel Cover: C**
2. **Shelf Width: 3', 4'**
3. **Shelf Depth: 19", 22", 25"**
4. **Standard Finish: STS**

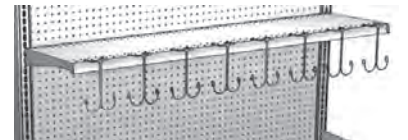


W HOOKS

- Fits into front row of perforations on steel Shelves or holes of Compartment Crosstubes
- Recommended maximum of eight hooks per four liner feet

Part # : DA1751 BCP

1. **W Hook: DA1751**
2. **Standard Finish: BCP**



SUFFIX KEY

STS = Stainless Steel

BCP = Chrome Plated